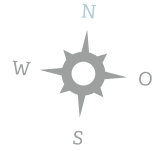
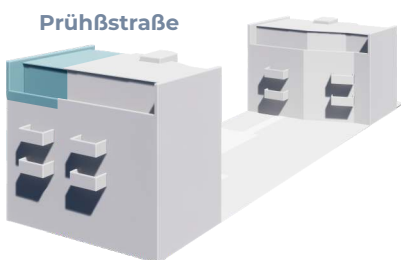
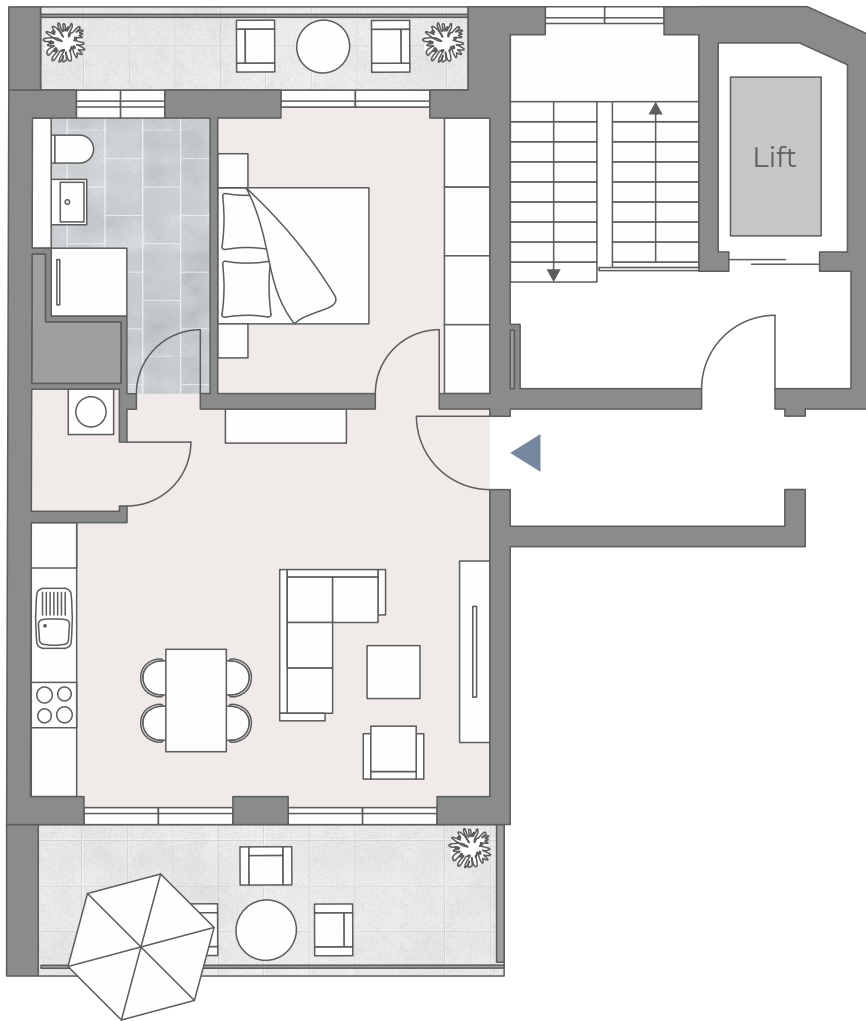


WE 15



2 Zimmer
Dachgeschoss



Prühßstraße

Eingang/Flur	7,29 m ²
Schlafen	13,28 m ²
Duschbad	7,11 m ²
Abstellraum	1,92 m ²
Kochen/Essen/Wohnen	22,21 m ²
Terrasse 1 (½)	2,99 m ²
Terrasse 2 (½)	5,96 m ²

Wohnfläche **60,75 m²**