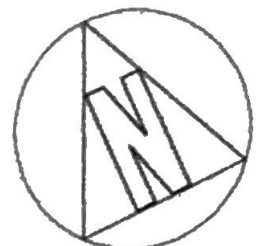
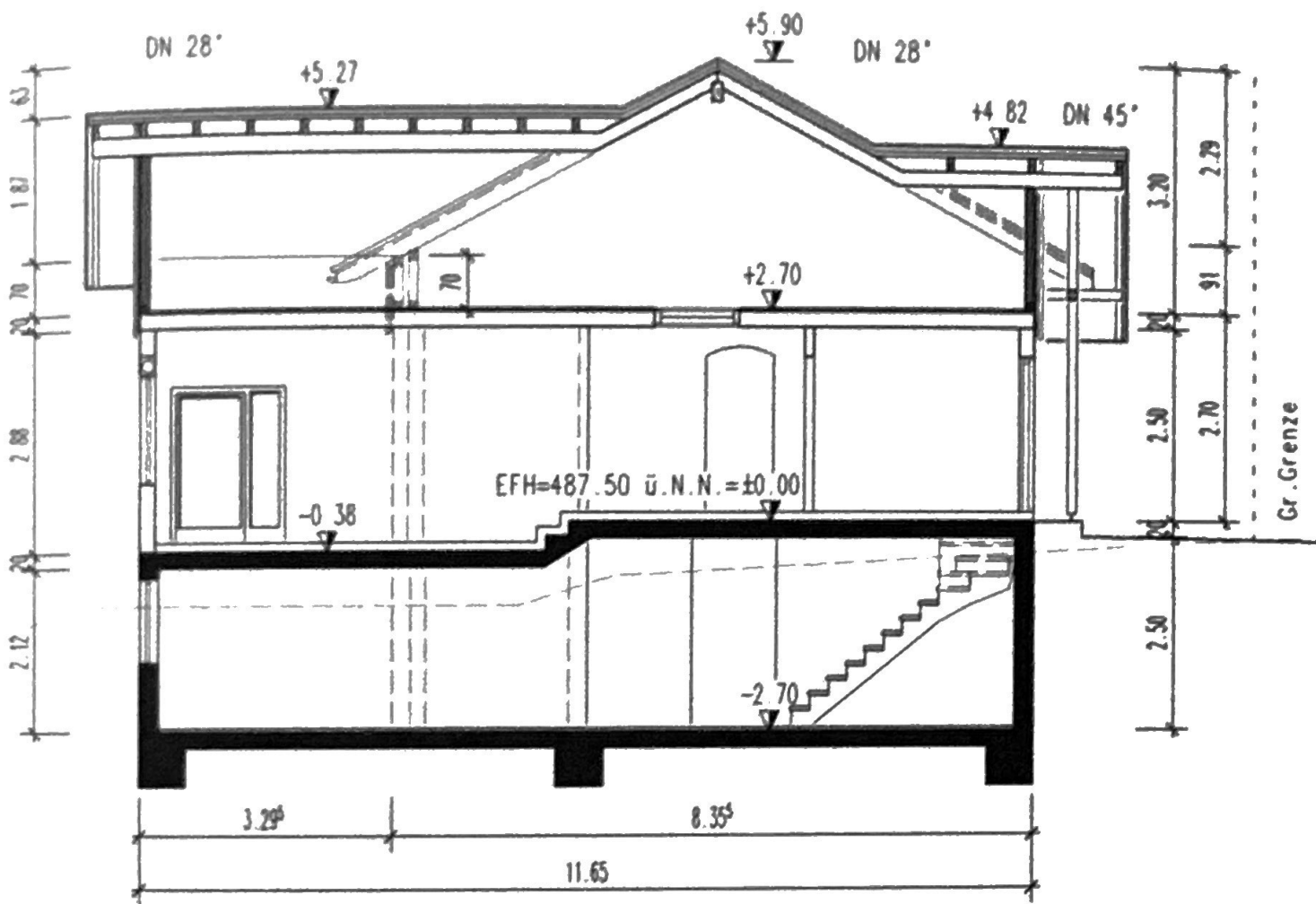


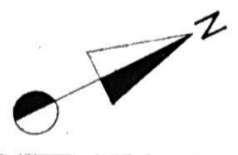
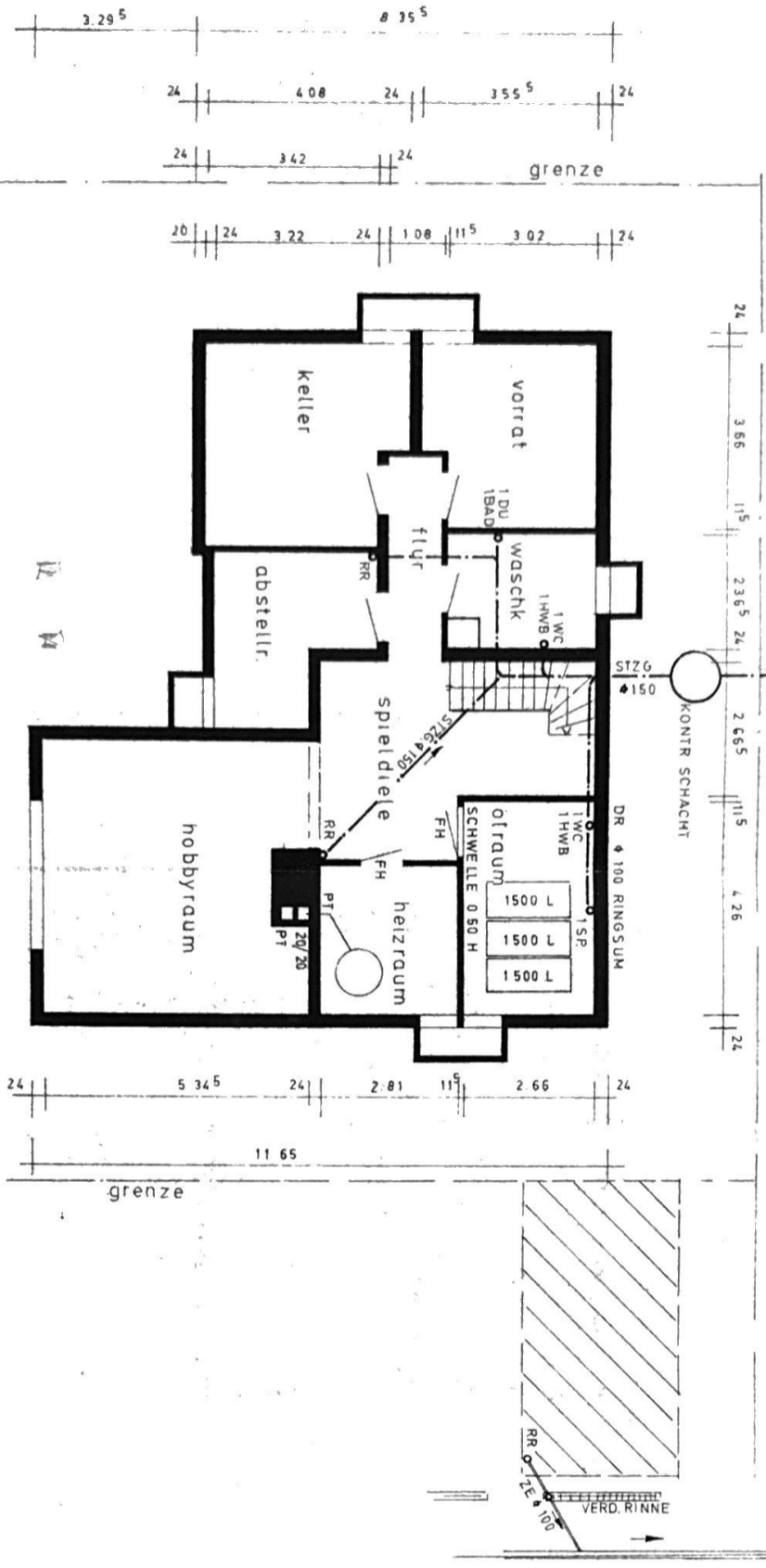
Schnitt A-A



UNTERGESCHOSS

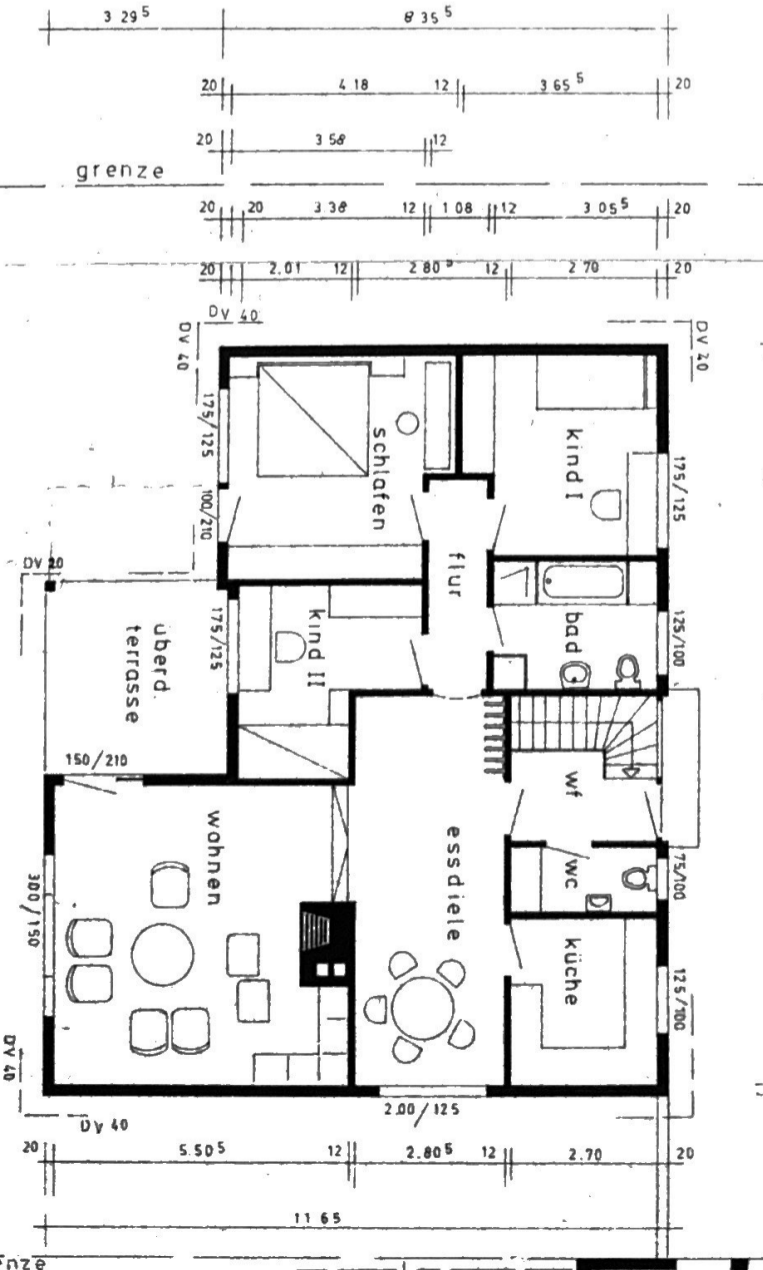
SO 48283
EINLAUF IN HAUPTK.
BEI CA 48270

HAUPTKANAL

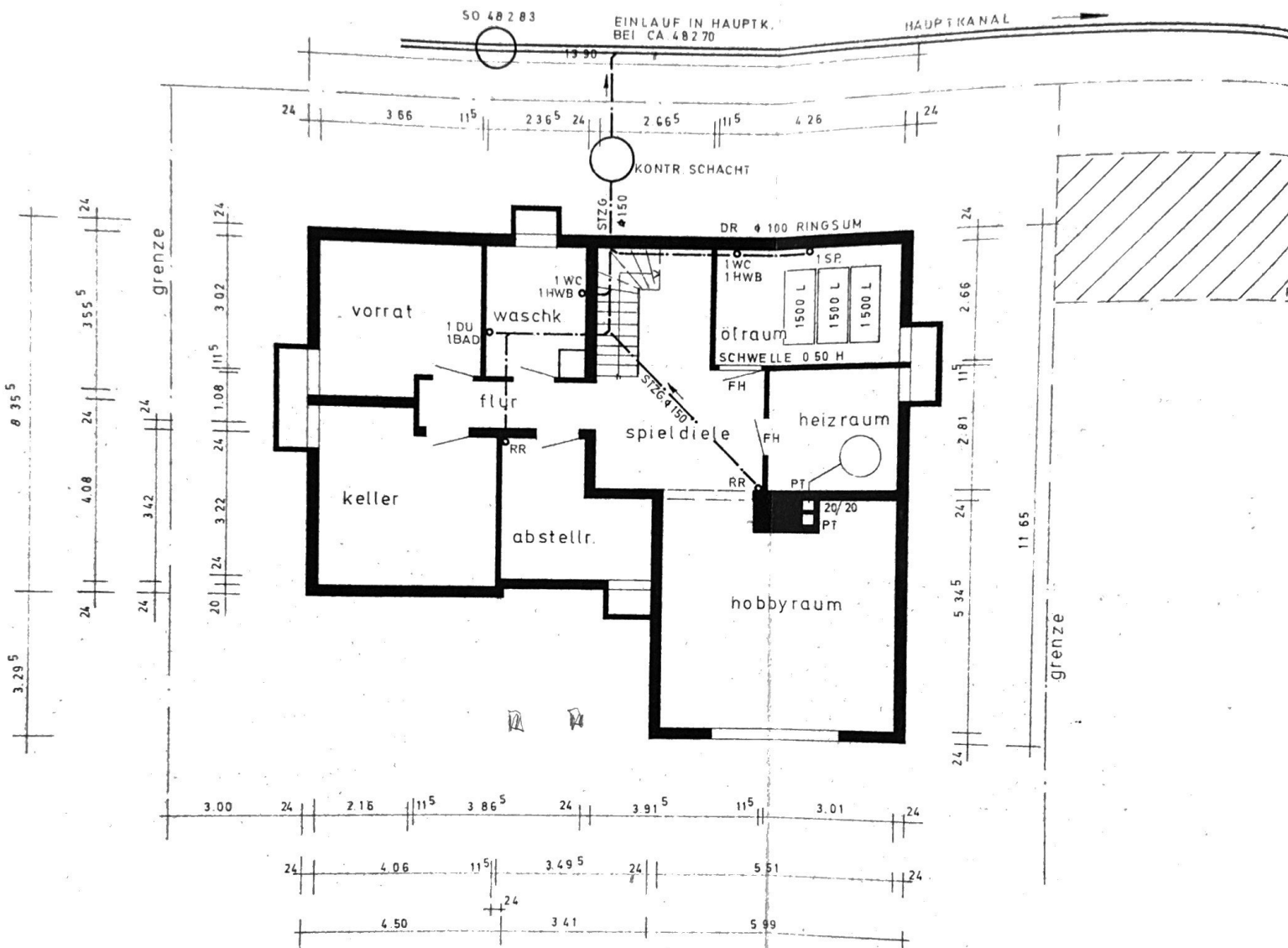


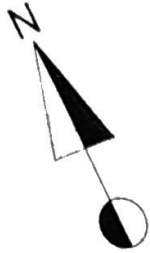
ERDGESCHOSS

13 90
grenze

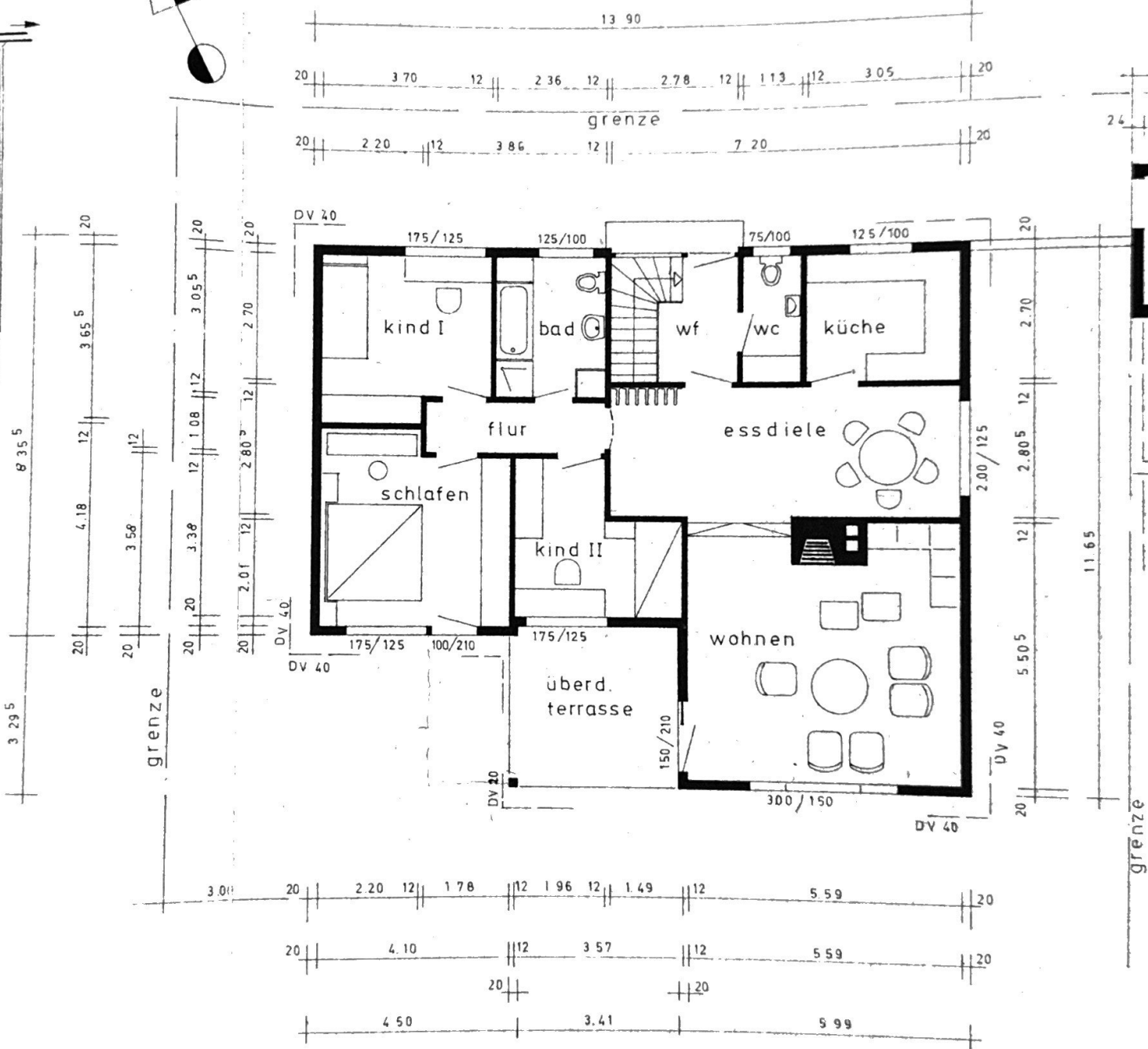


UNTERGESCHOSS





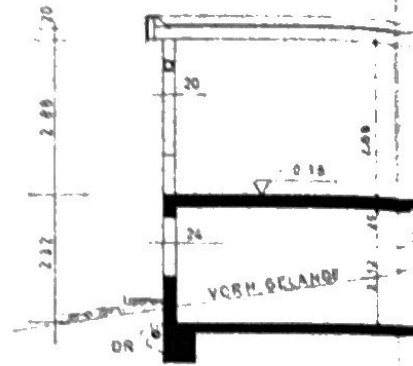
ERDGESCHOSS



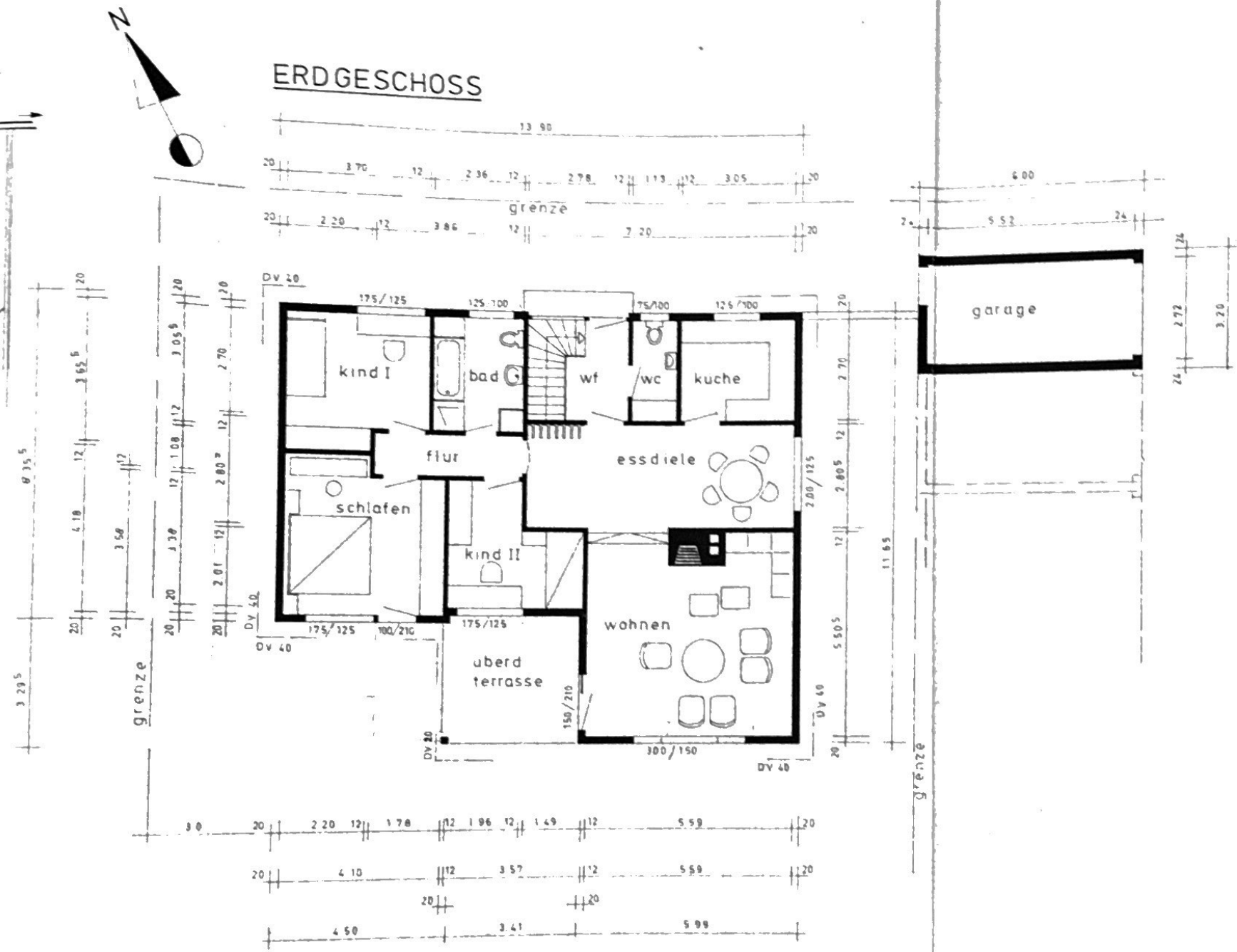
grenze

grenze

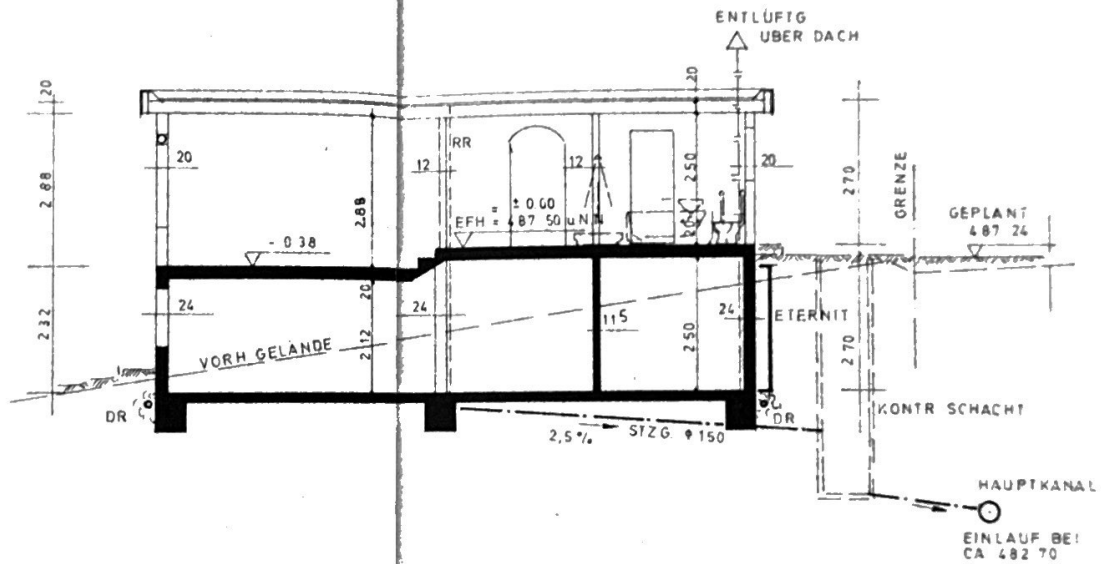
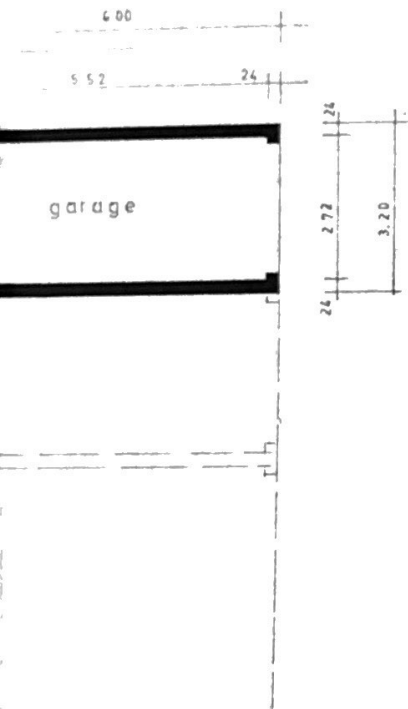
SCHNITT



ERDGESCHOSS



SCHNITT



FA. W. KEITEL 7185 ROT AM SEE-BRETTHEIM

GEZ. 1.10.75 LI	GEPR.	BAUHERR ROLAND PESCHKE 7031 GRAFENAU SONNENBERGSTR. 47
GEÄ.	GEÄ.	BAUORT CALW - HIRSAU STAMMHEIM GRASMÜCKENWEG PARZ. 5912/4
GEÄ.	GEÄ.	
M 1:100	UG, EG, SCHN	
TYP	PLAN-NR.	<i>J. Peschke R. Keitel</i>

Dachgeschoss

