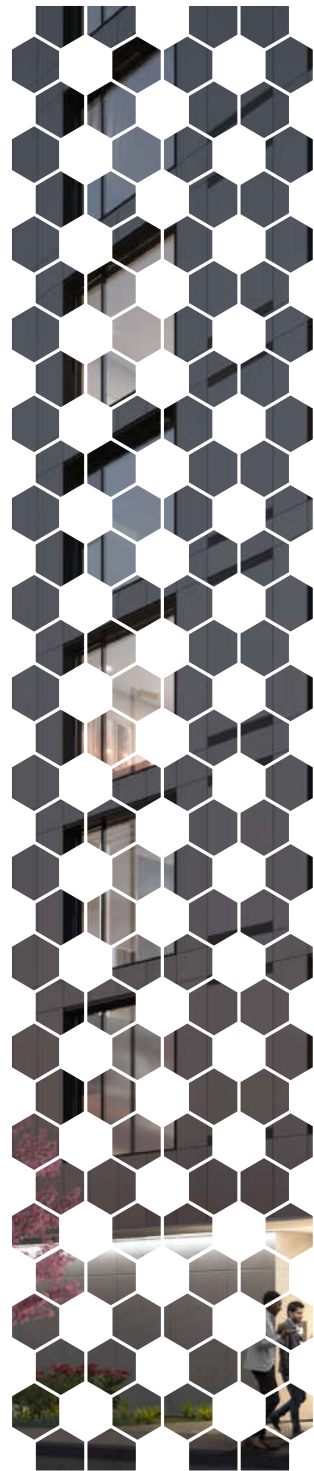




Inspired by
history, made
for the future...



Surrounded by tree-lined avenues and open communal gardens, this is a growing and affluent community on the banks of the River Irwell which is part of a much bigger neighbourhood - just minutes from Cathedral Gardens, Spinningfields, Deansgate and Victoria Station.



Floor-to-ceiling windows flood the apartments with natural light, ensuring that the considered, stylish spaces offer a healthy living environment. A blend of high class fixtures, fittings and appliances demonstrate the depth of thought and care that has gone into each and every apartment.

This approach has also been taken with regard to the communal facilities available. All residents can make use of the gymnasium, cinema room, stunning roof terraces, 24/7 front of house team, bicycle storage and more to get the absolute most out of life here.



Living spaces.



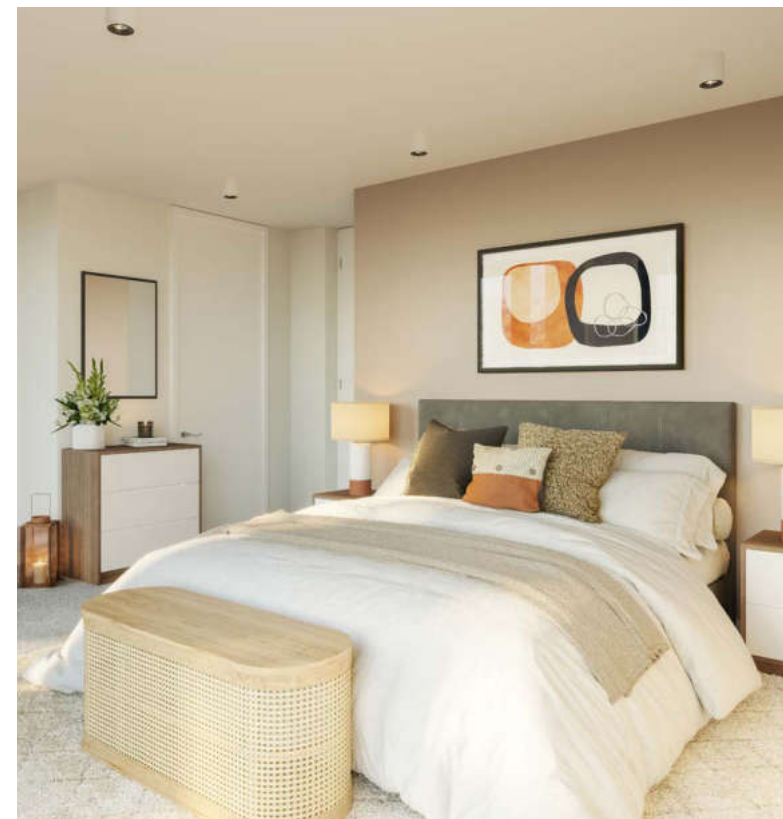
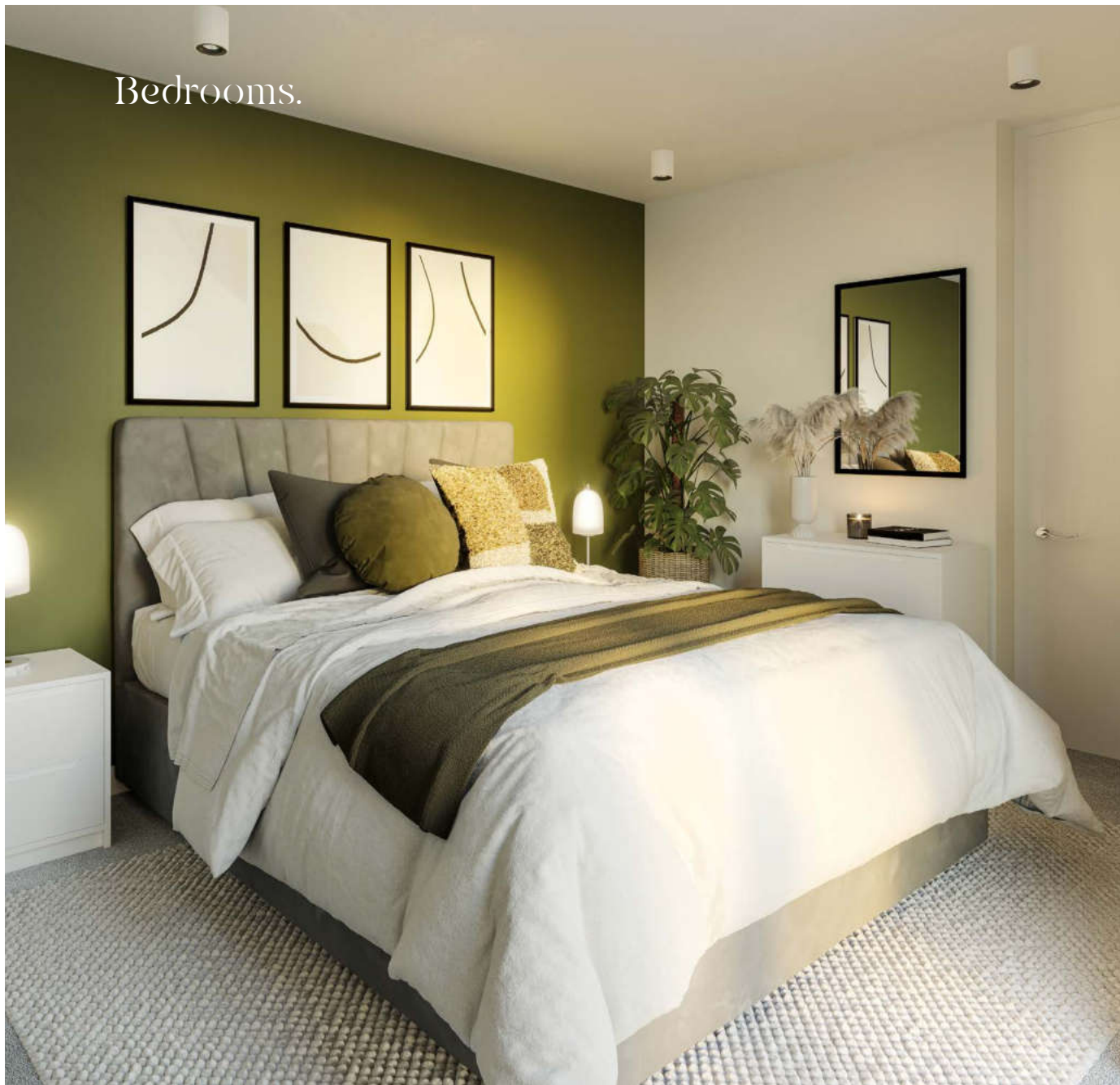
Living spaces.



Living spaces.



Bedrooms.







Residents lounge & co-working.



Residents gym.



Roof gardens.



Cinema room.



Manchester laid the foundations for the modern world, and now the city has transformed into a 21st century powerhouse.

This determination to push boundaries and create something truly special comes from Manchester itself. Whatever you're into, Manchester has blazed a trail and will have the perfect thing for you. It really is no surprise that this city was named the third-best in the world by TimeOut, or that reports in the Sunday Times show that young people from around the UK are moving here.

Residents can find everything they want from live music to high end shopping, to world-class restaurants, and much more besides.

The desirable Spinningfields and Deansgate areas are just over the river from Uptown, and the range of bars, restaurants and shops there will have something to suit every taste.



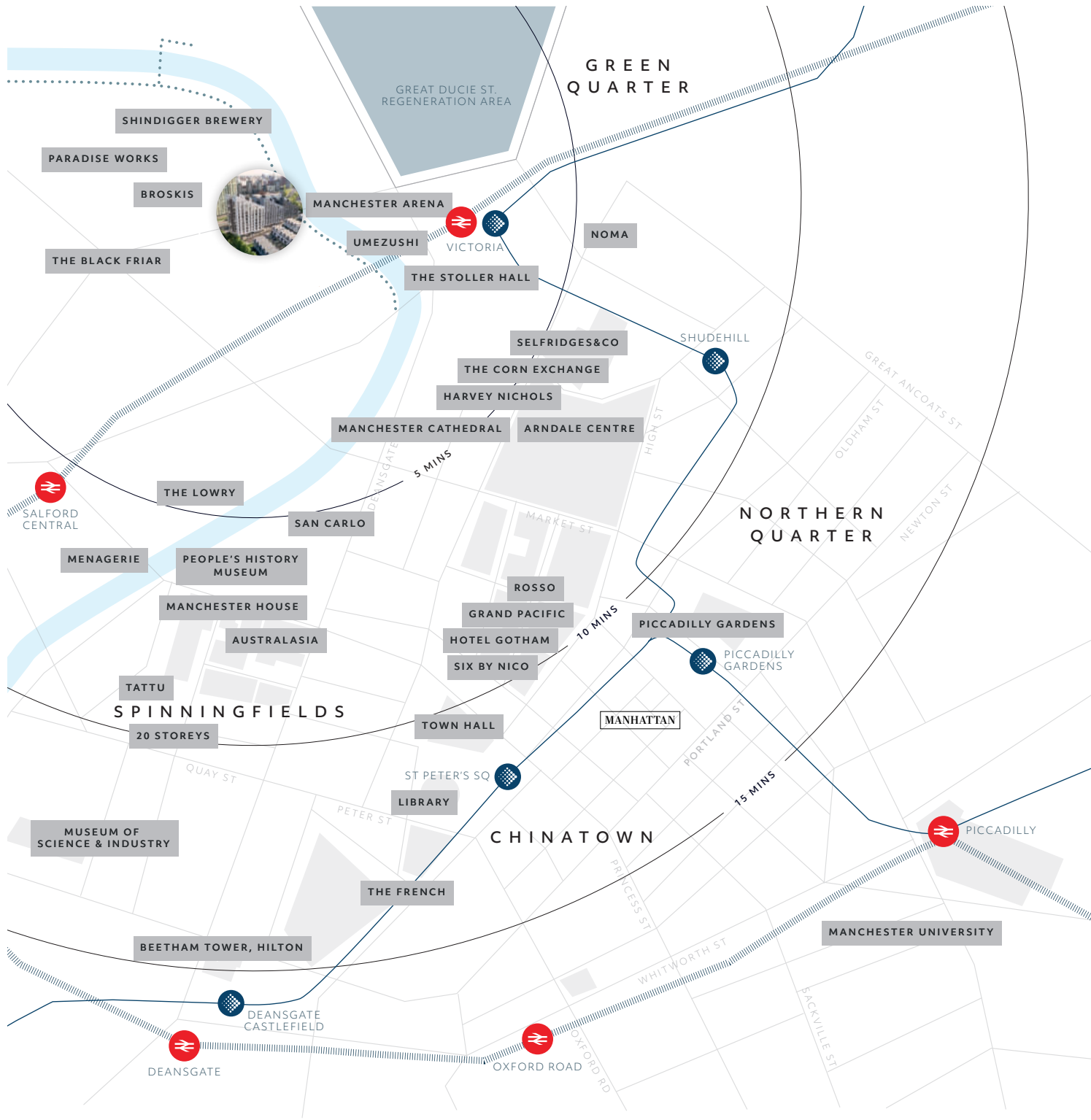
Uptown also enjoys a location that is perfect for those times when you want to take a break and get away for a break.

Travel further afield

London, Edinburgh, York, the Peak District, the Lake District and more are an easy train ride away – and the capital city will only get closer once the HS2 high speed rail line is completed.

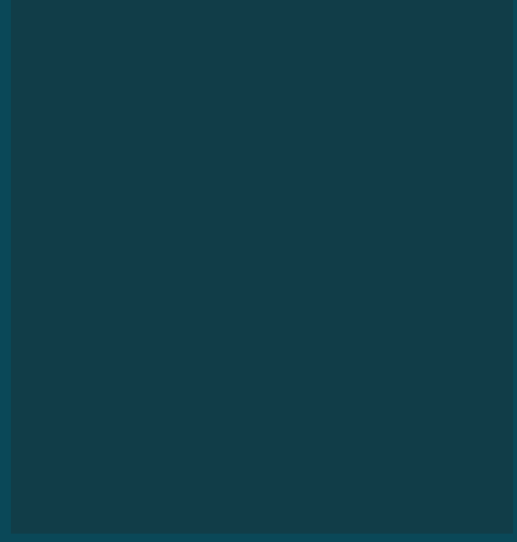
If you want to go further afield to satisfy that wanderlust, Manchester Airport flies to more than 200 destinations and is just a short train journey from Piccadilly Station.





Enjoy the best of both worlds




A convenient city lifestyle from a stylish waterfront location



BY FOOT:

- 5 minutes to Victoria
- 6 minutes to Arndale Centre
- 6 minutes to Deansgate
- 8 minutes to Spinningfields
- 11 minutes to Town Hall
- 12 minutes to Northern Quarter
- 12 minutes to St Peters Square

Key

-  TRAIN STATION
-  METROLINK STATION
-  RIVERSIDE WALK

Abundant riverside walks, green recreation spaces and bustling waterside restaurants make Manchester a delightful place to live.



Two Premier League football teams, the Old Trafford cricket ground and the National Cycling Centre – the home of British cycling – are just some of the sporting attractions on offer.

What's more, just a short distance from the city centre, you can enjoy the outstanding natural beauty of the Peak District National Park and the Pennines – the perfect place to go for a hike and take a break from the bustle of the city centre.

It's no surprise that Greater Manchester continues to earn accolades as the UK's most liveable and vibrant region, to go alongside its outstanding job opportunities and a booming economy.

