
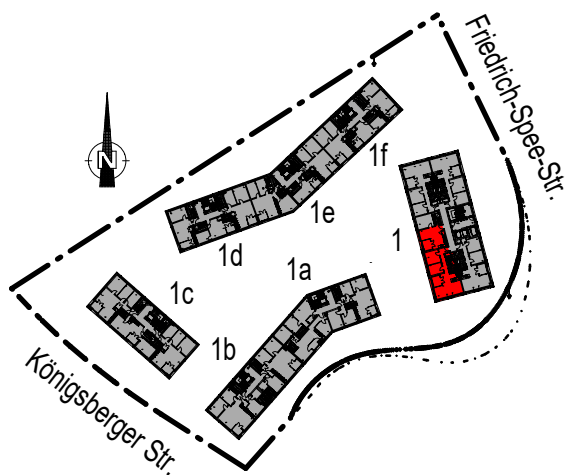
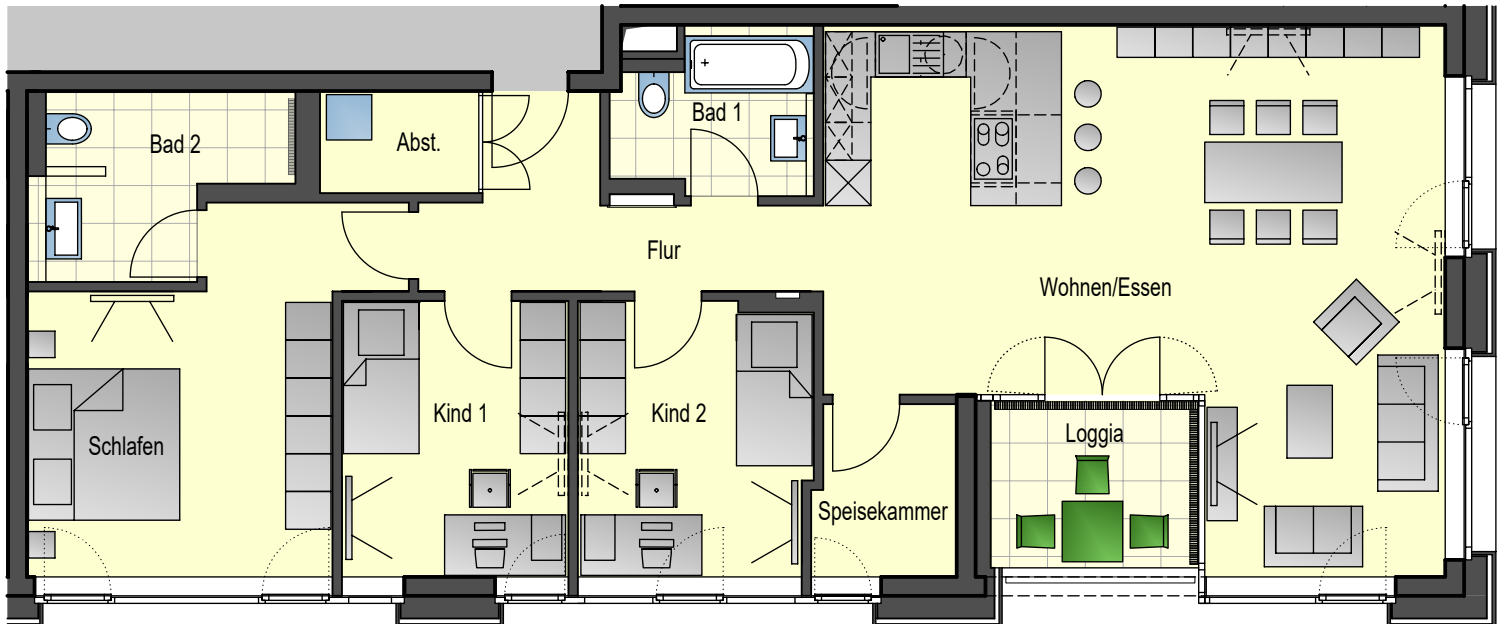


LICHTBLICK, Königsberger Straße 1, 15.OG, W 4.1.15.2

M 1:100 



4 Zimmer

Wohnen/Essen	47,88 m ²
Bad 1	5,23 m ²
Schlafen	18,39 m ²
Kind 1	10,93 m ²
Kind 2	11,03 m ²
Bad 2	6,99 m ²
Flur	8,47 m ²
Abstellraum	2,84 m ²
Speisekammer	4,22 m ²
Loggia (50% der Fläche)	3,04 m ²

Quadratmeter Vermietungsfläche:
119,02 m²

Wohnung 71