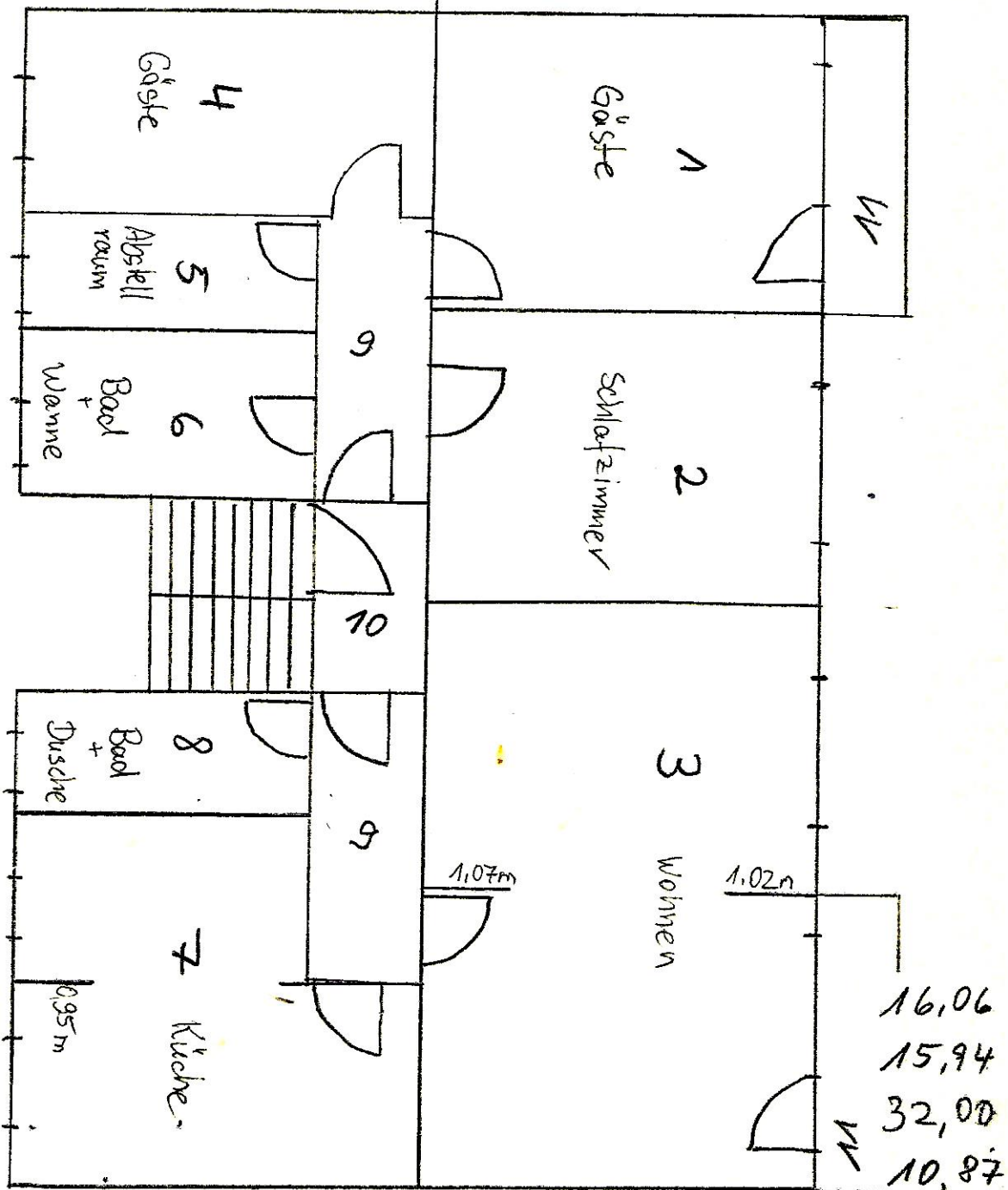


# Grundriss

123,32 qm



- |     |  |       |
|-----|--|-------|
| 1)  | $4,67 \times 3,44$   | 16,06 |
| 2)  | $4,62 \times 3,45$   | 15,94 |
| 3)  | $4,62 \times 6,89$   | 32,00 |
| 4)  | $4,83 \times 2,25$   | 10,87 |
| 5)  | $(3,40 \times 1,36) - (0,69 \times 0,33)$                      | 4,40  |
| 6)  | $(3,40 \times 1,97) - (0,28 \times 0,36)$                      | 6,60  |
| 7)  | $(3,40 \times 1,97) - (0,28 \times 0,36) + (4,83 \times 2,25)$ | 17,47 |
| 8)  | $(3,40 \times 1,36) - (0,69 \times 0,33)$                      | 4,40  |
| 9)  | $(3,44 \times 1,33) \cdot 2$                                   | 9,16  |
| 10) | $2,25 \times 1,05$   | 2,36  |
| 11) | $(3,45 \times 1,18) \cdot 2$                                   | 4,08  |