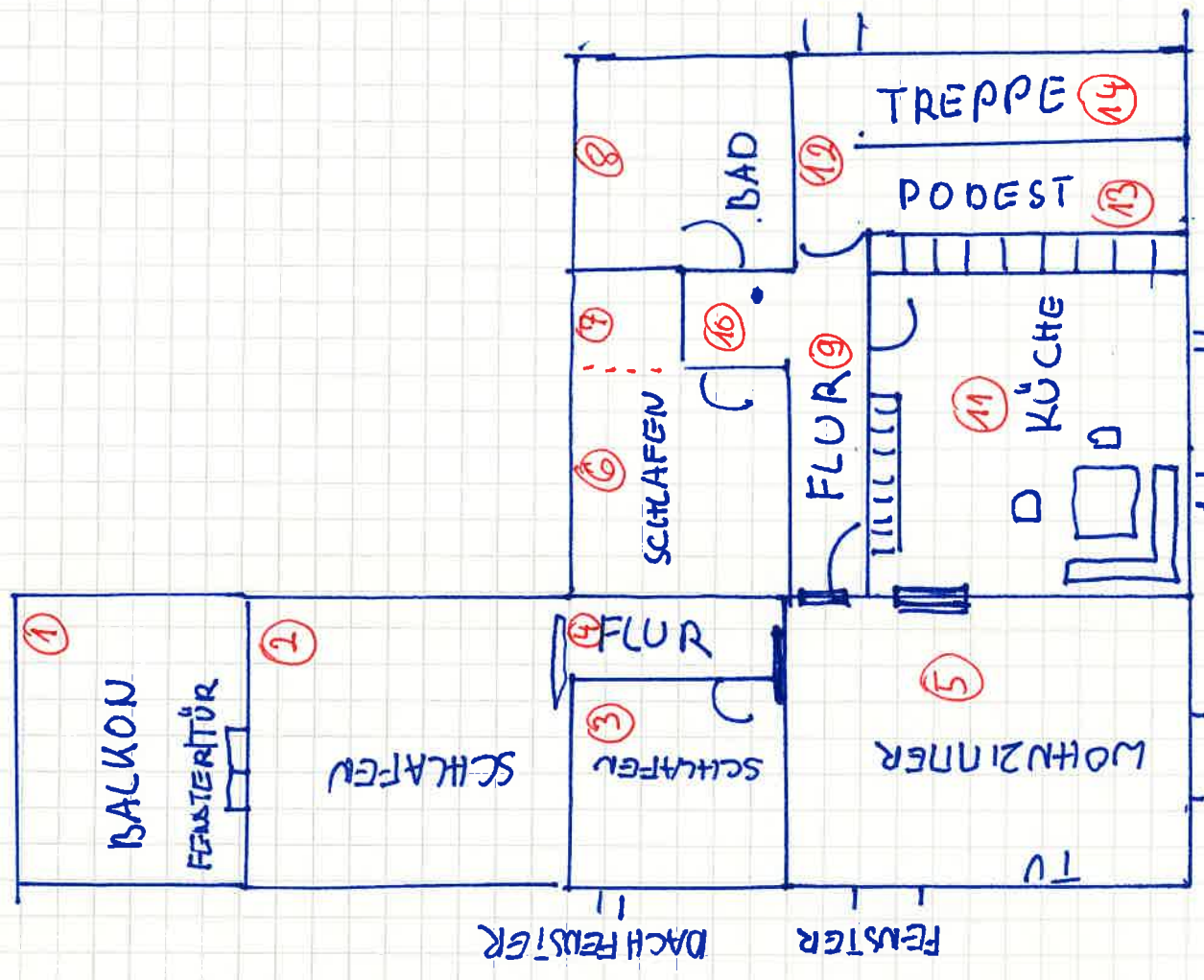




①	②	③	④	⑤	⑥	⑦	⑧	⑨	⑩	⑪	⑫	⑬	⑭
$3,0 \times 5,0 = 15$	$5,0 \times 5,0 = 25$	$3,4 \times 3,0 = 10$	$1,3 \times 3,6 = 5,7$	$5,0 \times 5,0 = 25$	$2,9 \times 3,4 = 9,9$	$1,6 \times 1,6 = 2,5$	$2,8 \times 3,3 = 9,2$	$1,5 \times 4,7 = 7$	$4,6 \times 1,6 = 2,5$	$4,0 \times 5,8 = 23$	$2,1 \times 1,2 = 2,4$	$0,9 \times 5,8 = 5$	1.20
													= WFL gesamt 143,50

GARTENWALD



FENSTER

DACHFENSTER 2 DACHFENSTER

STRASSESEITE